

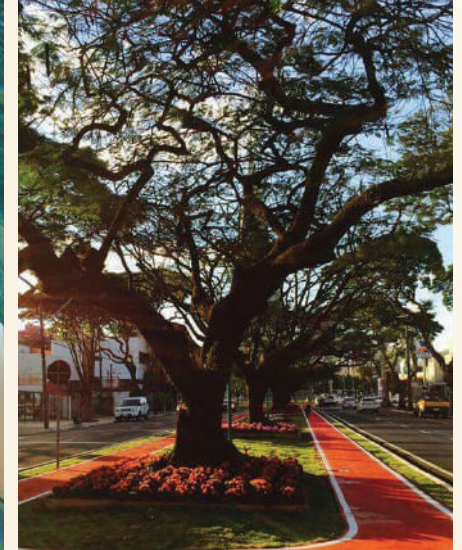
SOLENA

@

THE ORCHARD PLACE

# PROJECT USPs

- Largest community in JVC with world-class amenities to live, work and play.
- Children and pet friendly.
- Surrounded by parks and green areas.
- Opportunities for all buyers from Studios - 3 Bedrooms.
- Spacious and unique layouts including lofts and private plunge pool options.
- Premium finishing.
- Semi-furnished and fully-furnished options.
- Competitive pricing & easy payment plan.



# 1.9 million Sq.ft

The largest european style community in JVC.  
Contemporary European, Mediterranean architecture & design.

TOWER E

TOWER D



# PEAK SUMMIT REAL ESTATE DEVELOPMENT

The developer is proud to showcase its expansive portfolio, which currently includes an impressive 1.9 million square feet of residential and commercial space under construction in Dubai.

It also has 500 million square feet of exciting new projects in the development phase.

1.9 MN

SQUARE FEET

Residential &  
commercial space

500 MN

SQUARE FEET

Projects in the  
development phase

SOLENA

@

THE ORCHARD PLACE



# PROJECTS



One of the biggest communities in  
Jumeirah Village Circle (JVC)



Villas on  
The Palm Jumeirah



New high-rise project to be revealed in  
Meydan Horizon district



New boutique development facing the  
golf course in Dubai Sports City

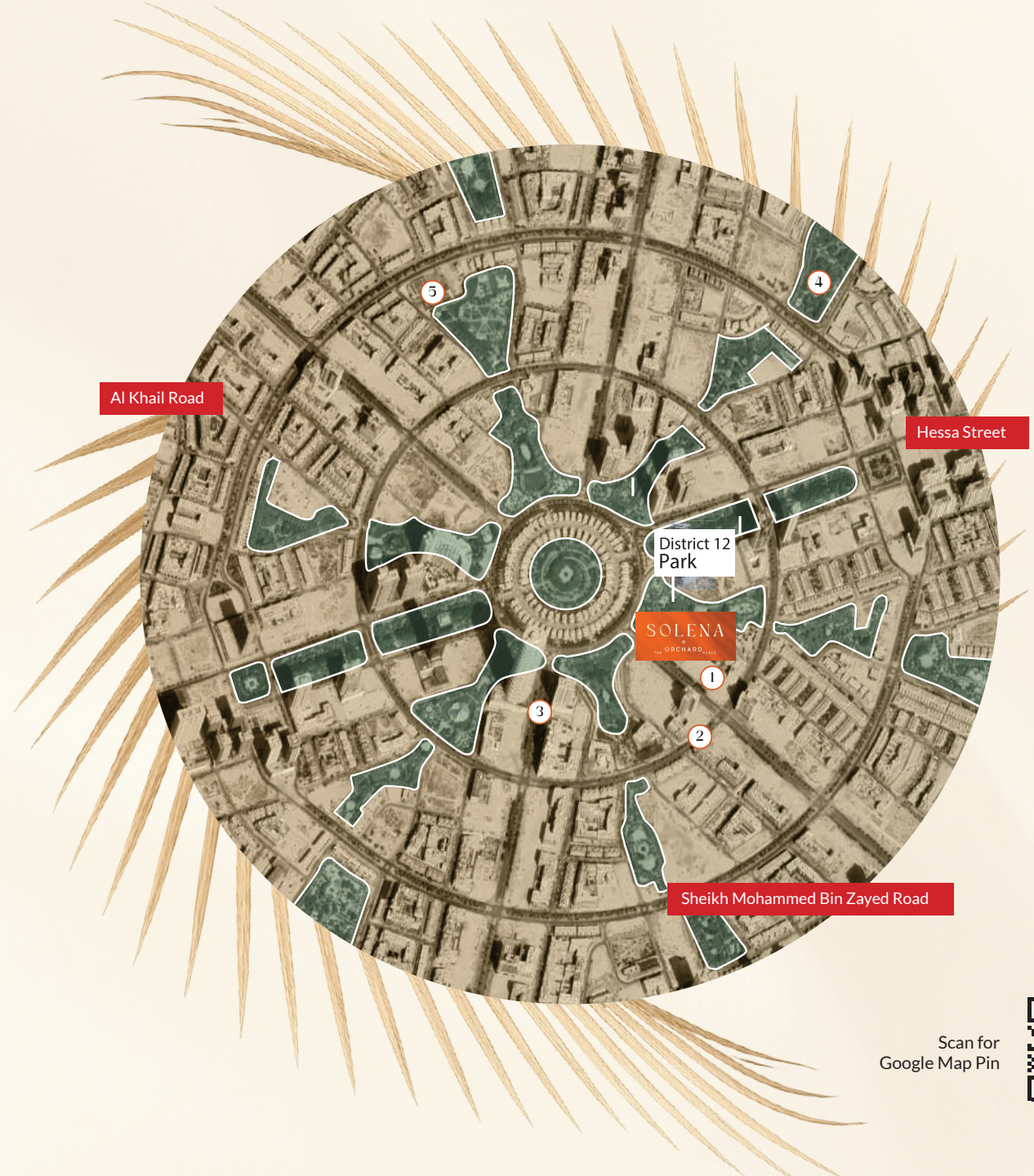
# STRATEGIC LOCATION

## DISTRICT 12, JVC

- |                                  |        |
|----------------------------------|--------|
| ① Ladybird Early Learning Centre | 2 mins |
| ② Modern Vet JVC                 | 2 mins |
| ③ Five Hotel JVC                 | 3 mins |
| ④ Circle Mall                    | 5 mins |
| ⑤ JSS International School       | 7 mins |

### PROXIMITY TO OTHER LANDMARKS

Dubai Miracle Garden	10 mins	Dubai International Airport	30 mins
Dubai Autodrome	10 mins	Al Maktoum International	30 mins
Mall of the Emirates	15 mins	Airport	
Dubai Marina	15 mins	JSS International School	7 min
Global Village	15 mins	Brighton College Dubai	7 min
Palm Jumeirah	20 mins	GEMS Founders School	7 min
Downtown Dubai / Burj Khalifa	20 mins	Life Medical Centre	8 min
Safa Park	20 mins	Revival Clinic	8 min
		French Care Clinic	8 min



Scan for  
Google Map Pin



# View Analysis



*Front view (Sapphire 32)  
and Pool View*

TOWER E

TOWER D



*Park Side View*



TOWER E

TOWER D

Back view (Sky Vista)



# Main Road View



TOWER E

TOWER D

Top View



TOWER E

TOWER D

# UNIT SIZES

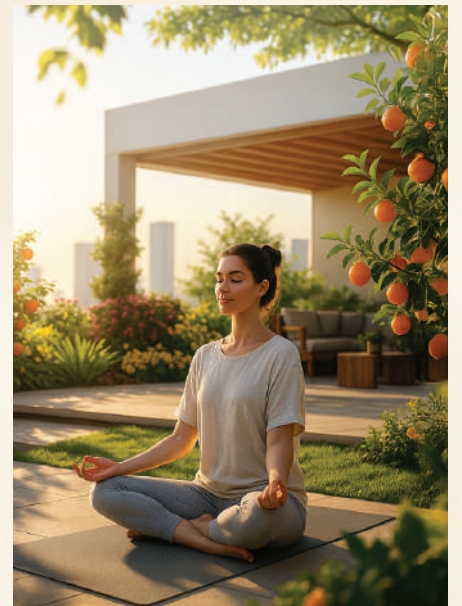
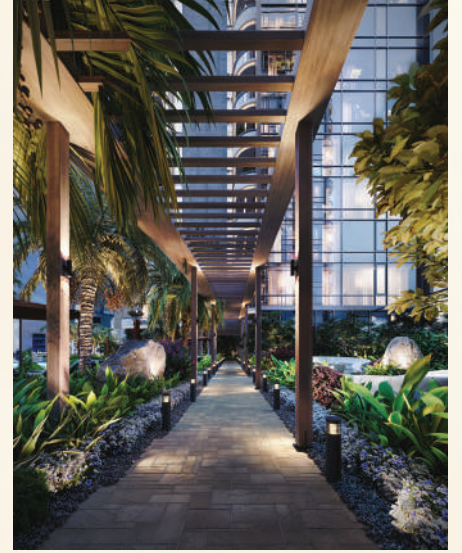
Unit Mix	No. of Units	Min Size	Max Size
Studio Apartments	21	531	531
1 BR Apartments	99	687	1,127
2 BR Apartments	43	1,304	1,337
Penthouses	3	2,105	3,128
Total Units	166		



# AMENITIES

- Adult pools and kids pools.
- A gymnasium.
- A terrace for yoga/stretching.
- Steam rooms.
- Separate lockers and showers.
- Padel tennis.
- Separated BBQ areas.
- Landscaped gardens and seating areas.
- Kid's zone (outdoor and Indoor).
- Common areas for business meetings and events.
- Offices.
- A welcoming lobby.

Estimated service charges: AED 12 - 15 per sq.ft.



*f*LOOR  
PLATES

# Podium Level



## TOWER D

Typical floor from 2-10 level  
& 12-21 level



## TOWER D

Typical floor 11 level



# *U*NIT LAYOUTS

# STUDIO APARTMENT

## Type Two

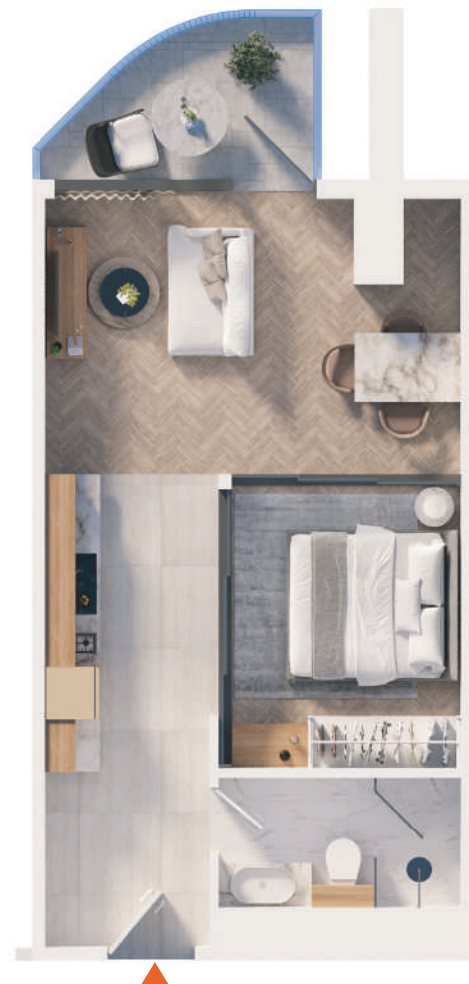
TOWER D  
Unit 04  
Floors 2-21

TOWER D



### AREA SUMMARY

Apartment Area	469 sq.ft
Balcony Area:	61 sq.ft
Total Area:	530 sq.ft



# ONE BEDROOM

## Type Six



### AREA SUMMARY

Apartment Area	716 - 720 sq.ft
Balcony Area:	114.8 - 115 sq.ft
Total Area:	830 - 835 sq.ft

# ONE BEDROOM

## Type Seven - *with private pool*



### AREA SUMMARY

Apartment Area	736.20 - 729 sq.ft
Balcony Area:	192.45 - 191 sq.ft
Total Area:	928.7 - 920 sq.ft

# TWO BEDROOM

Type One –with private pool

TOWER D  
Unit 02  
Floors 02-21

TOWER D



## AREA SUMMARY

Apartment Area	1131 sq.ft
Balcony Area:	205 sq.ft
Total Area:	1336 sq.ft

# TWO BEDROOM

Type Two –with private pool

TOWER D  
Unit 05  
Floors 02-21

TOWER D



## AREA SUMMARY

Apartment Area	940 sq.ft
Balcony Area:	363 sq.ft
Total Area:	1303 sq.ft

# QUALITY SPECIFICATIONS

## KITCHENS

- Bosch branded appliances - Fridge, Gas Oven, Extractor Hood, Washing Machine, Dishwasher
- Modern glossy sintered stone countertops and backsplashes
- White semi-matte kitchen cabinetry

## FLOORING

- Herringbone SPC wood-effect flooring in living / dining room and bedrooms
- Glazed porcelain tiles in kitchen, bathrooms and powder rooms

## BATHROOMS

- Porcelain floor and wall tiles
- Sienna cherry flamed wood veneer cabinets
- Glossy sintered stone countertops and backsplashes
- Walk-in showers with high-quality accessories

## TERRACES

- Natural beige, matte floor tiles



SHOW HOME  
IMAGES



Kitchen & Dining



Living Room & Dining



Bed Room



Powder Room

# COMMON AREAS



THE ORCHARD PLACE

Lobby



Park Area with Firepit



Infinity Pool



Padel Tennis Court

SOLENA

@

THE ORCHARD PLACE